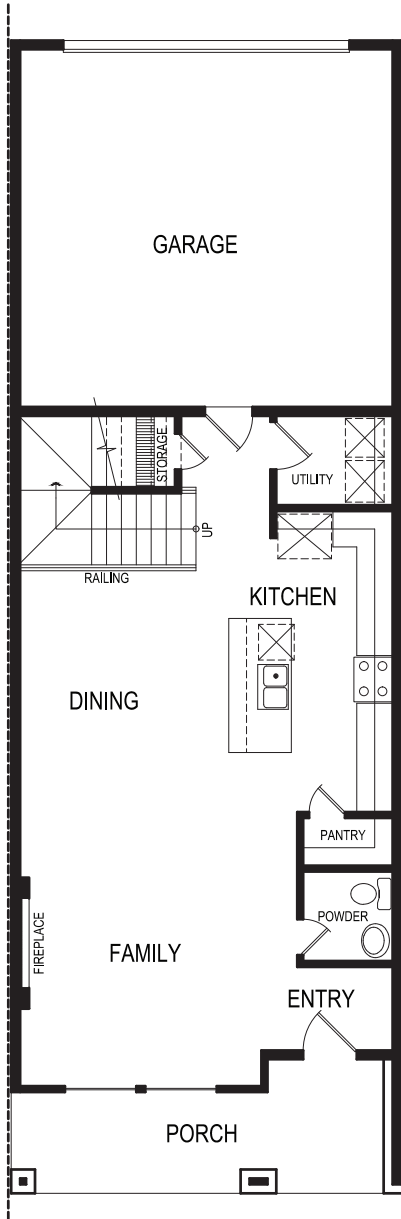
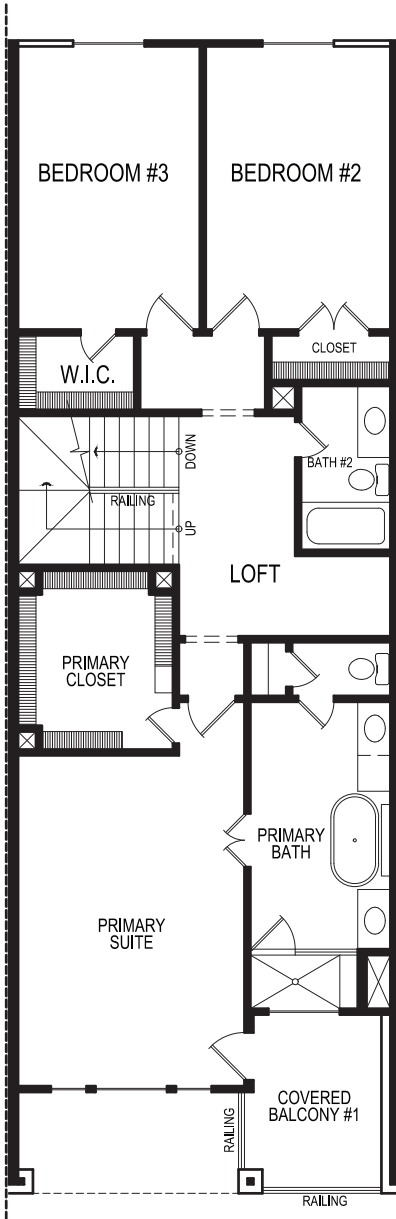


# FIRST TEXAS HOMES

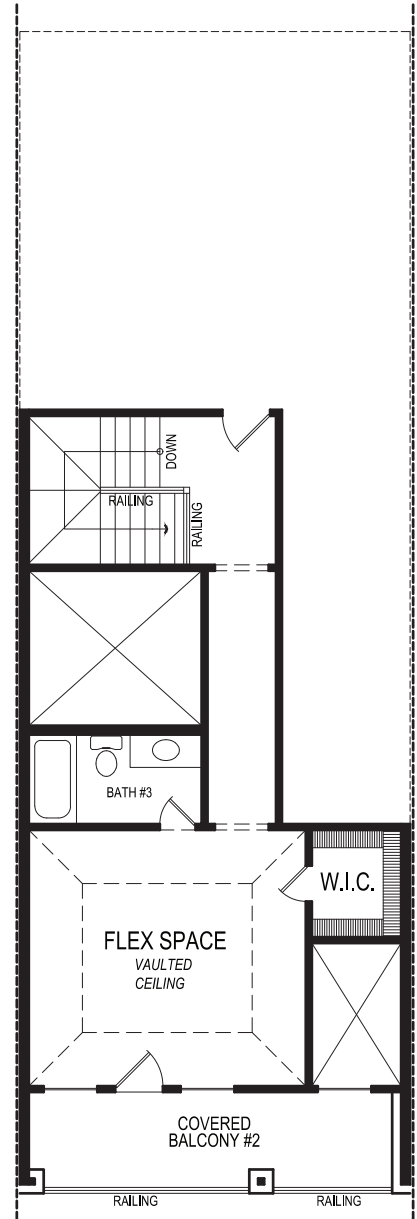
CYPRESS R | 4  | 3.5  | 2  | 2,589 SQFT



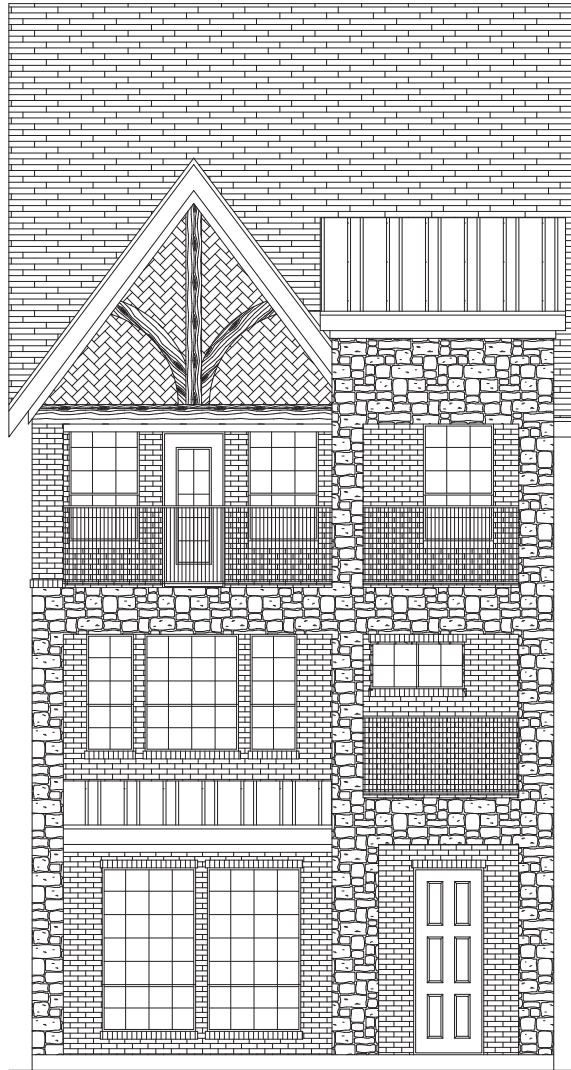
FIRST FLOOR PLAN



SECOND FLOOR PLAN



THIRD FLOOR PLAN



ELEVATION A

---

# FIRST TEXAS<sup>®</sup> HOMES

*First Texas Homes reserves the right to make additions or alterations to this plan. This may involve changes to the floor plan layout, elevations, and specifications regarding square footage, bed and bathroom count. For more information, please speak with a Sales Consultant*