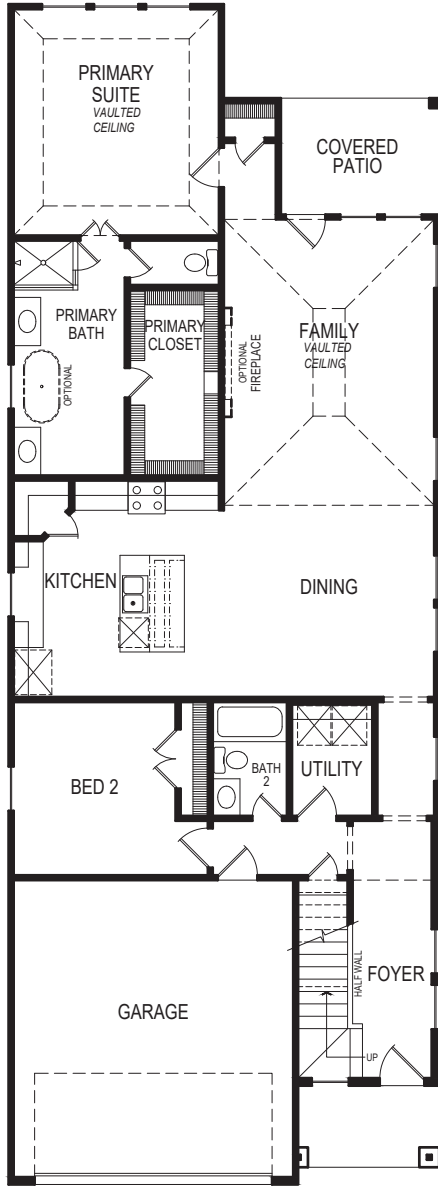
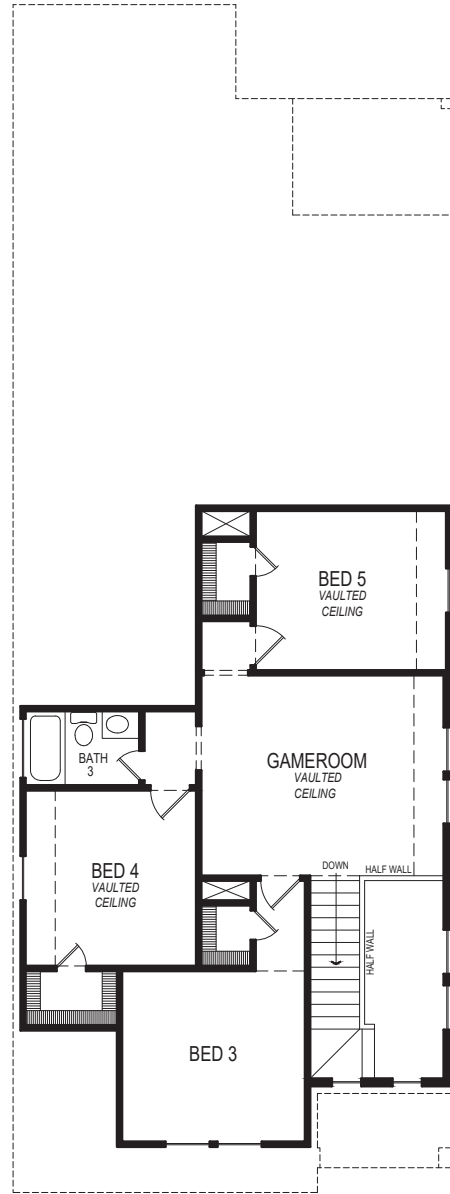


FIRST TEXAS HOMES

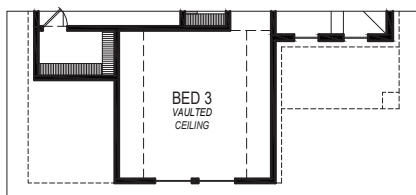
TRUMAN F | 5  | 3  | 2  | 2,599 SQFT



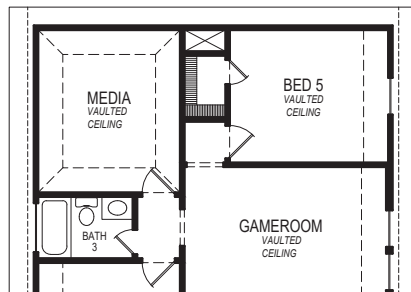
FIRST FLOOR PLAN



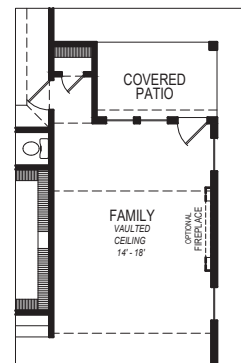
SECOND FLOOR PLAN



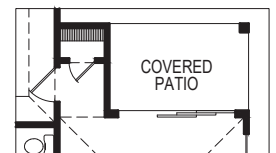
SECOND FLOOR FOR ELEVATIONS C, D, E, F, AND J



OPTIONAL MEDIA



OPTIONAL VAULTED CEILING IN FAMILY



OPTIONAL SLIDING GLASS DOORS



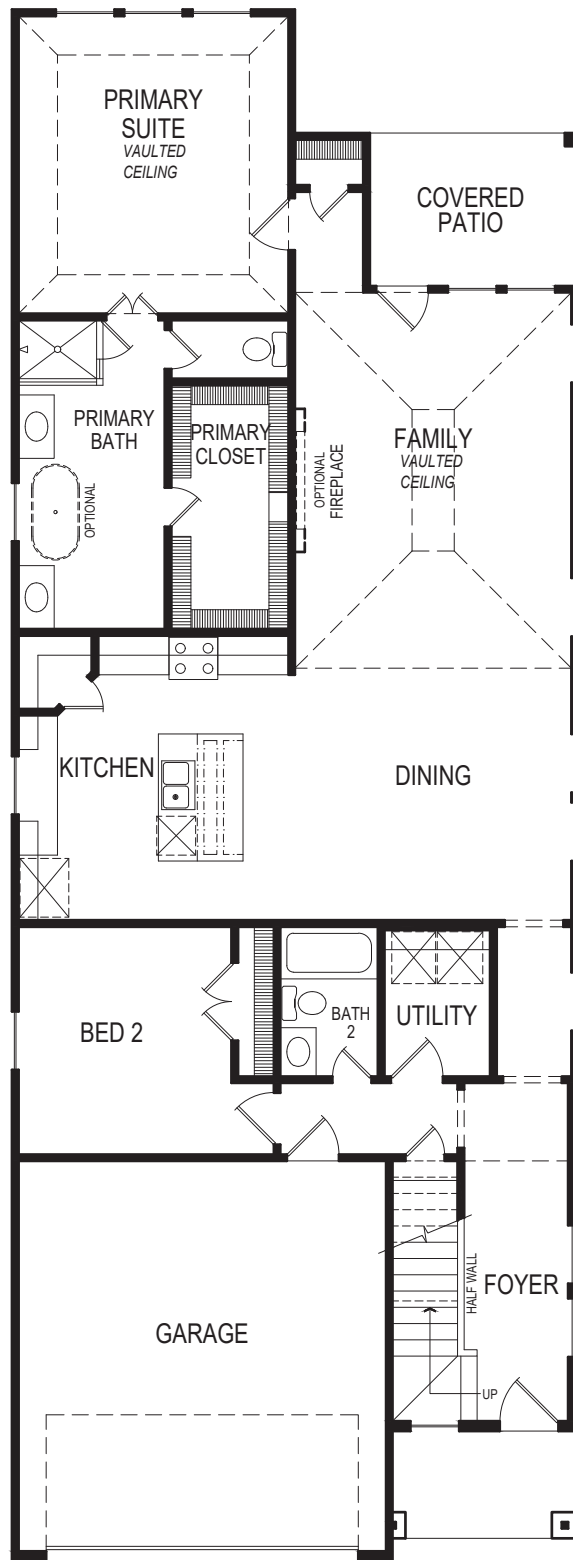
ELEVATION A



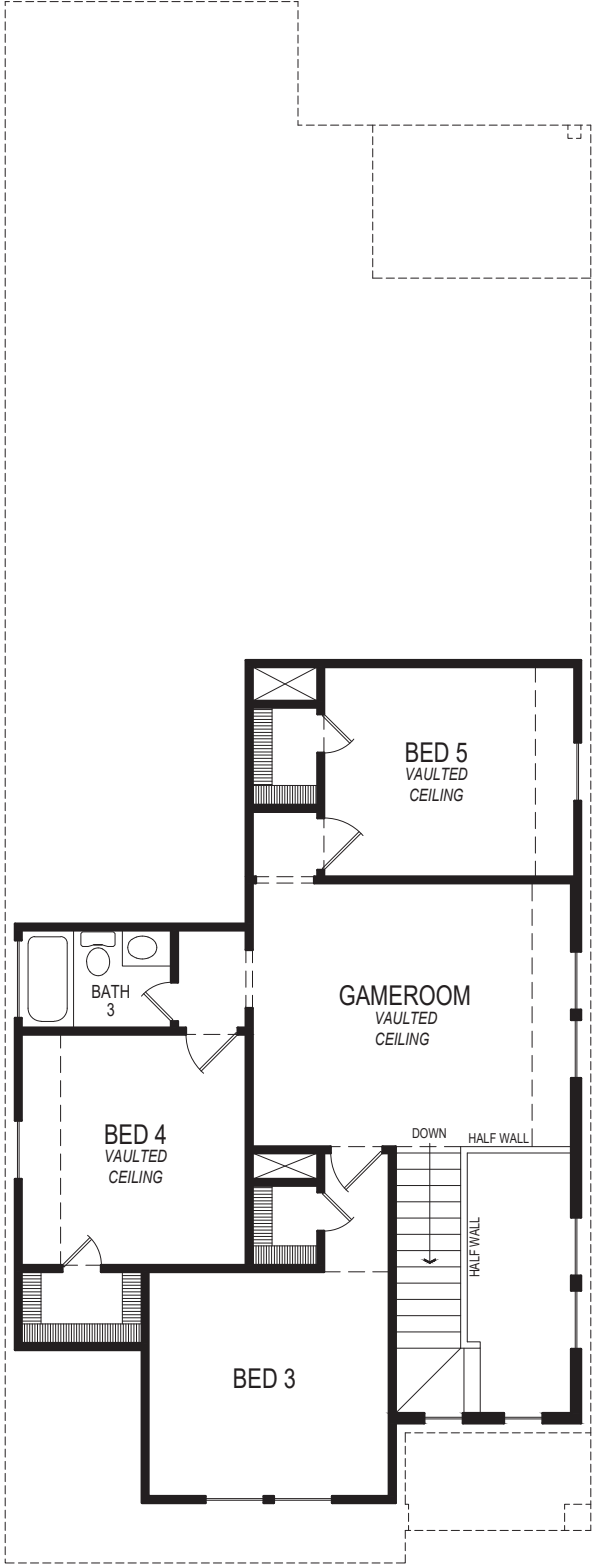
ELEVATION B

FIRST TEXAS[®] HOMES

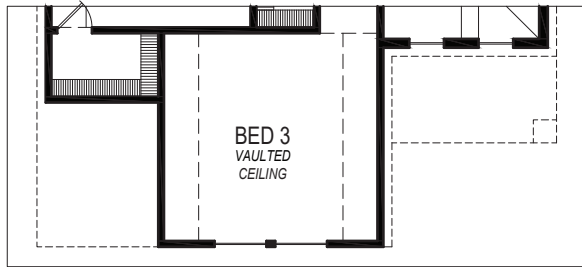
First Texas Homes reserves the right to make additions or alterations to this plan. This may involve changes to the floor plan layout, elevations, and specifications regarding square footage, bed and bathroom count. Elevation availability may vary per community. For more information, please speak with a Sales Consultant.



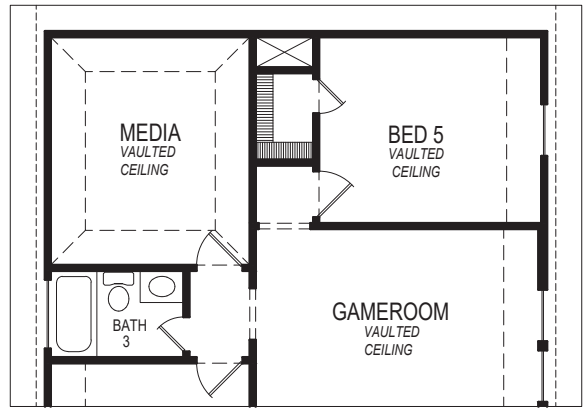
FIRST FLOOR PLAN



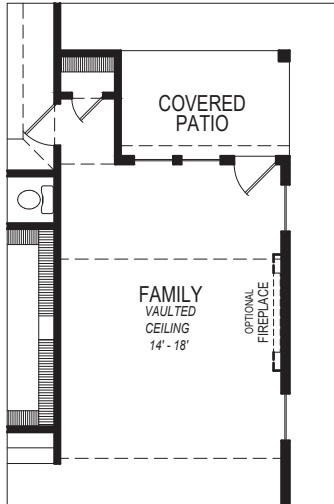
SECOND FLOOR PLAN



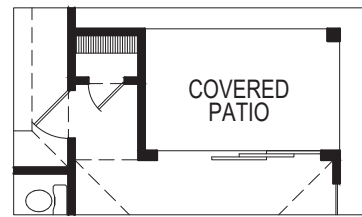
SECOND FLOOR FOR
ELEVATIONS C, D, E, F, AND J



OPTIONAL
MEDIA



OPTIONAL VAULTED
CEILING IN FAMILY



OPTIONAL
SLIDING GLASS DOORS



ELEVATION A



ELEVATION B

