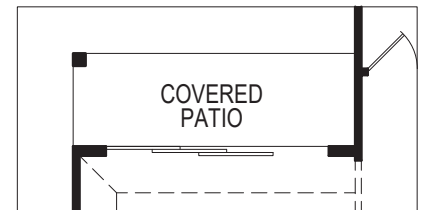
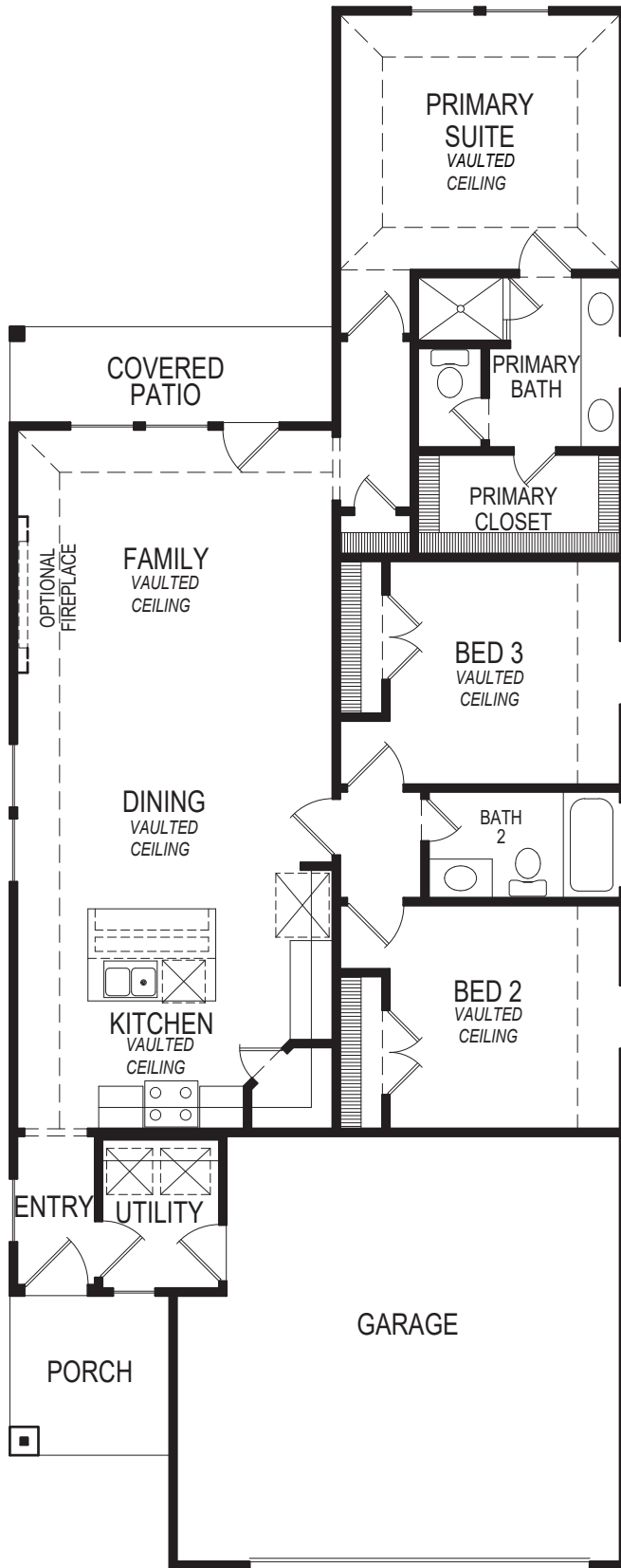


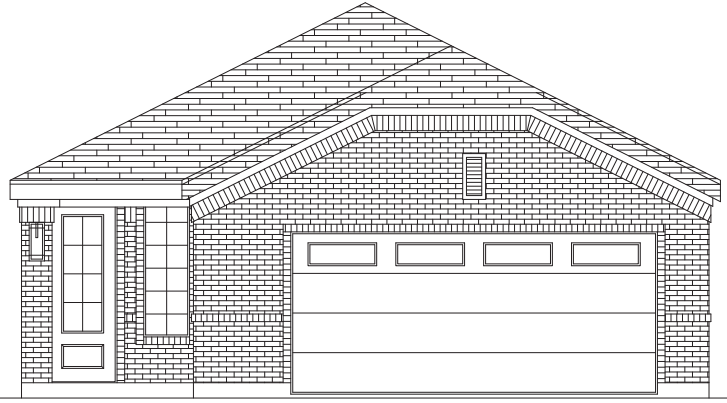
# FIRST TEXAS HOMES

PIERCE F | 3  | 2  | 2  | 1,365 SQFT

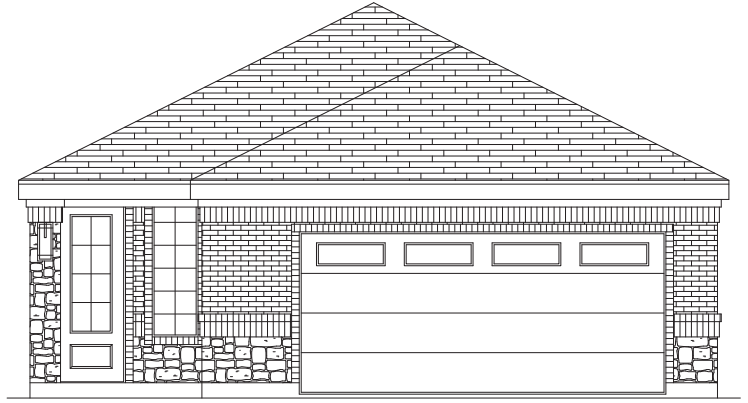


OPTIONAL SLIDING GLASS DOORS

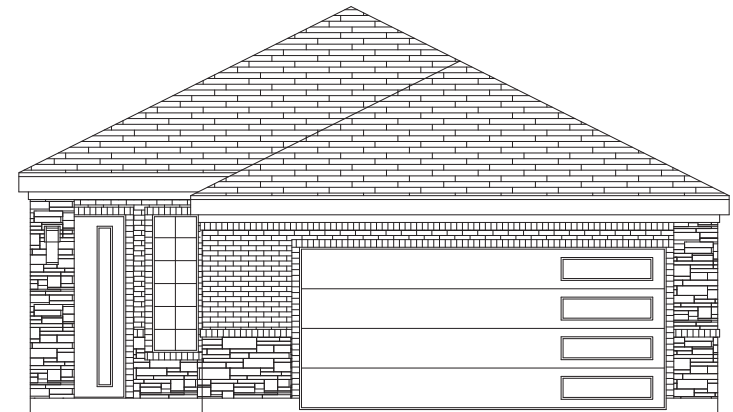
FLOOR PLAN



ELEVATION C



ELEVATION D



ELEVATION E

---

# FIRST TEXAS<sup>®</sup> HOMES

*First Texas Homes reserves the right to make additions or alterations to this plan. This may involve changes to the floor plan layout, elevations, and specifications regarding square footage, bed and bathroom count. Elevation availability may vary per community. For more information, please speak with a Sales Consultant.*